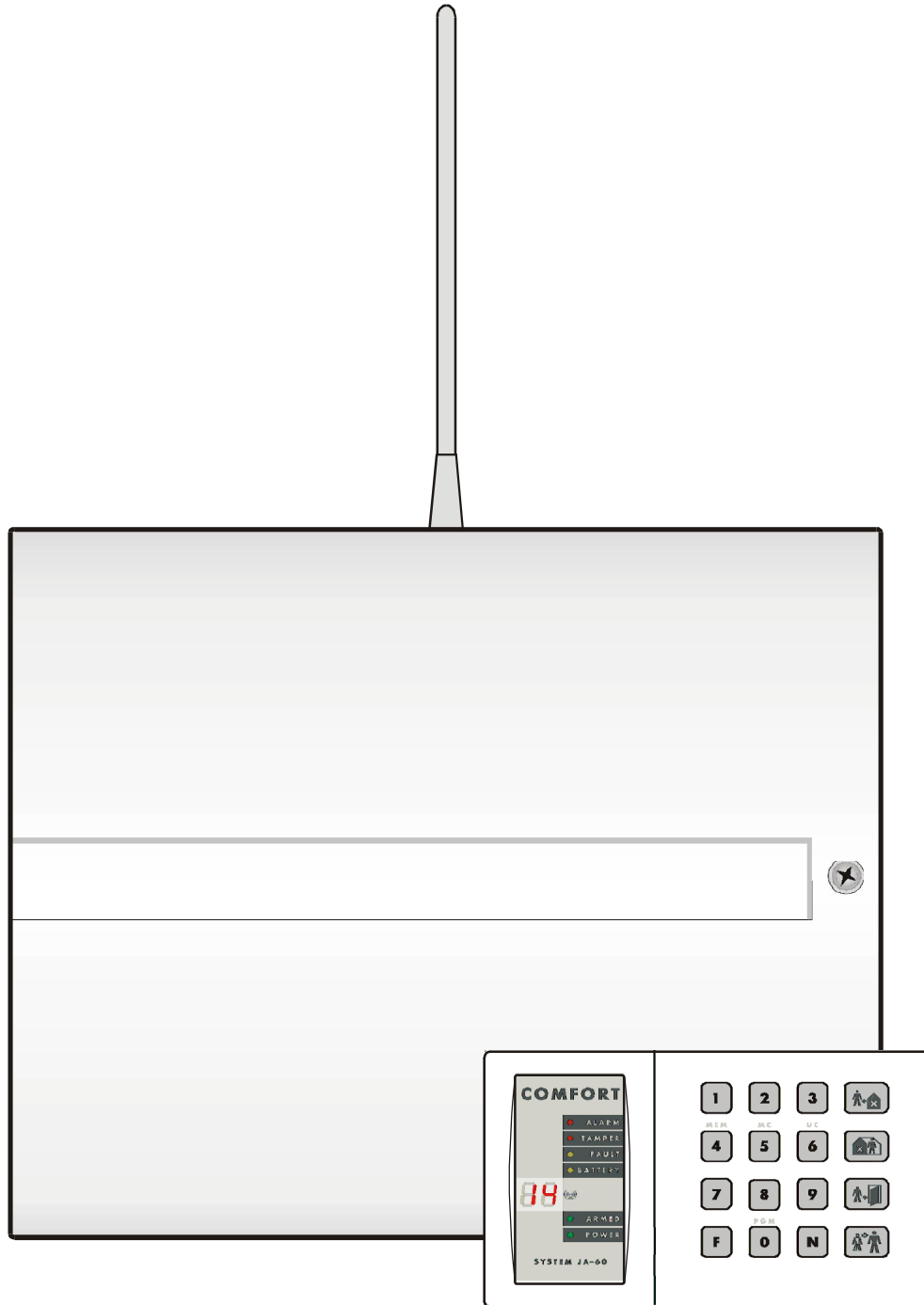






JA-63 „PROFI“



1		3
2		4
2.1		4
3		4
3.1		4
3.2		4
4		4
5		4
6	JA-60	4
7		7
8		7
9		7
10		7
10.1		9
10.2	: 60 nn xys	9
10.3	: 20 x	10
10.4	: 21 x	10
10.5	: 22 x	10
10.6	PgX PgY : 23 x & 24 x	10
10.7		11
10.8	: 26 x	11
10.9	: 27 x	11
10.10	: 28 x	11
10.11	: 290	12
10.12	UC-2xx : 299	12
10.13	   (F1, F2, F3), F4, F8 & F9 : 30 x	12
10.14	() : 31 x	13
10.15	: 32 x	13
10.16	: 33 x	13
10.17	: 34 x	13
10.18	: 35 x	13
10.19	: 36 x	14
10.20	: 37 x	14
10.21	: 38 x	14
10.22	: 39 x	14
10.23	: 690 x	14
10.24	: 691 x	15
10.25	: 692 x	15
10.26	: 693 x	15
10.27	: 697 x	15
10.28	: 61 nns	15
10.29	: 62 nns	15
10.30	: 63 nns	16
10.31	/ : 64 nahhmm	16
10.32	: 5 nSC nSC	16
10.33	: 6 9 9 9	16
10.34	: 4 hh mm dd MM YY	17
11		17
12	SMS	18
12.1	: 7xxx...xxFy	18
12.2	SMS : 7xxx...xxF5	19
12.3	: 8x	19
12.4	SMS : 9 y x	19
12.5	: 90 x	20
12.6	: 99 x	20
12.7	: 89	20
13		20
13.1	: 05	21
13.2	: 07	21
14		21
14.1	: 00 and 01	22
14.2	: 02	22
14.3	: 03	23
14.4	: 04	23
14.5	: 06	23
14.6	: 096060	24
15		24
16		25
16.1	Contact ID	26
17	JA-63	27
18		28
18.1		28
19		28
20		28
21		29
21.1		29
21.2	JA-63	29
21.3		29
21.4		30
21.5		30
22		32

1

JA-63 "Profi"

(12 1,3 / 2,6 /).
(,)

JA-63K 4

JA-63KR (

"R"

JA-60 (8

16

UC.

63KR

20 (4

16

JA-65X

5 SMS

SMS

(ComLink SW

JA-60U).

GSM JA-60GSM

SMS,

JA-60E (

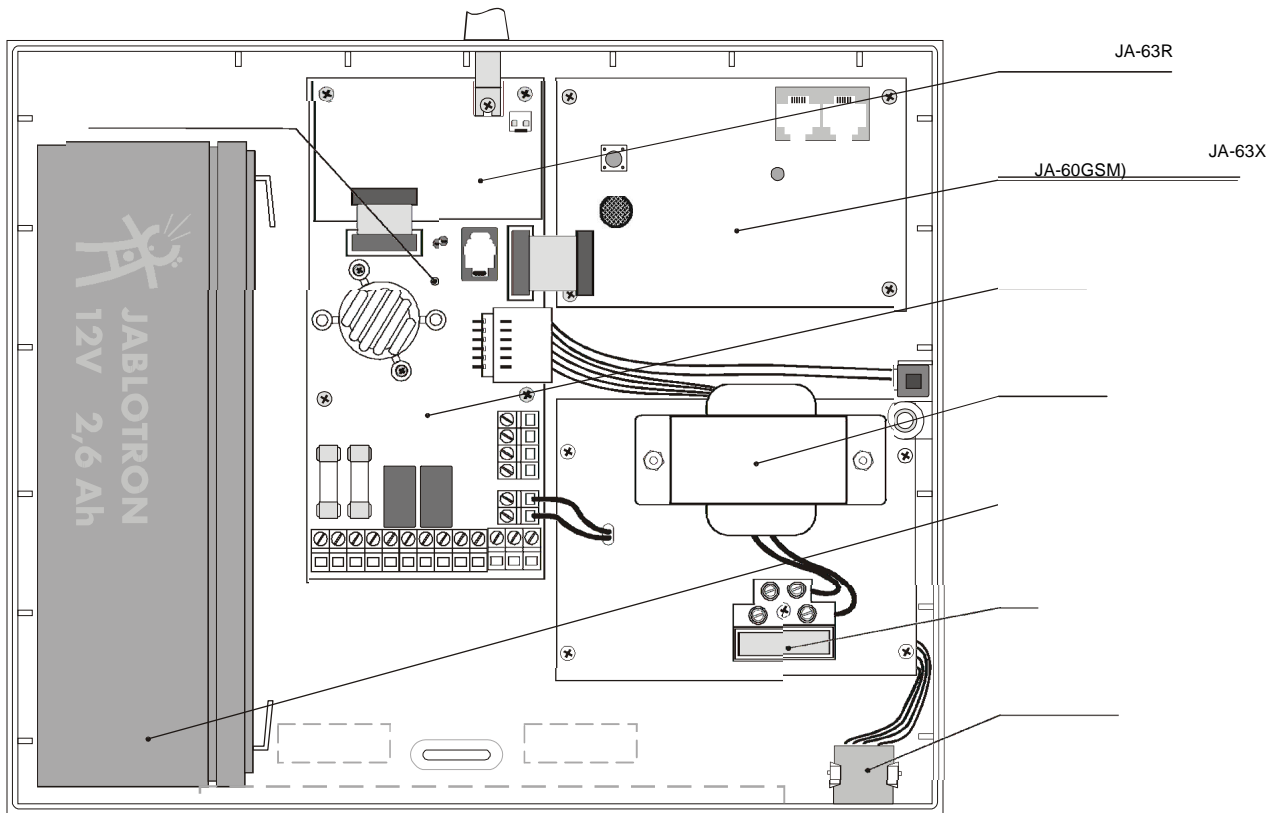
JA-60U).

(63KR, 63KRX)

RC-11, RC-22
ComLink SW (

JA-60D.

JA-60F



JA-63

	R	X	GSM	
JA-63K				4
JA-63KR				16 (32) 4
JA-63KRX				16 (32), 4
JA-63KRG				16 (32), 4

60GSM

: o R

63K 63KR.

63K 63KX.

JA-65 X

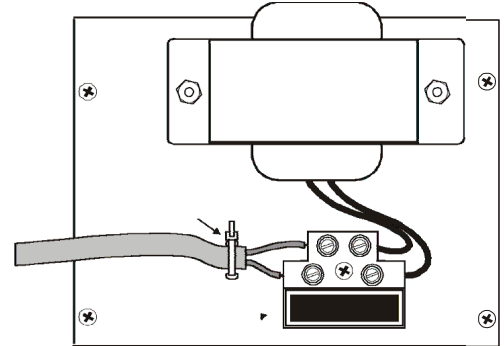
GSM JA-

2

- ()
- ()
- ()

2.1

- $0.75 - 1.5 \text{ }^2$
- 10
- T100 / 250)
- ()



3

- "R", (AN-01).
100

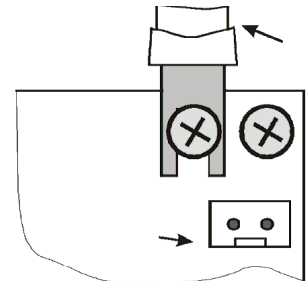
3.1

3.2

AN-01

AN-01

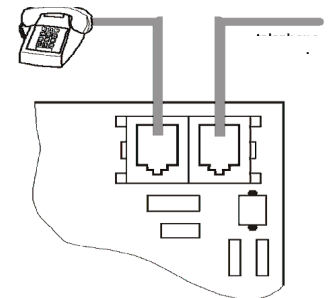
()

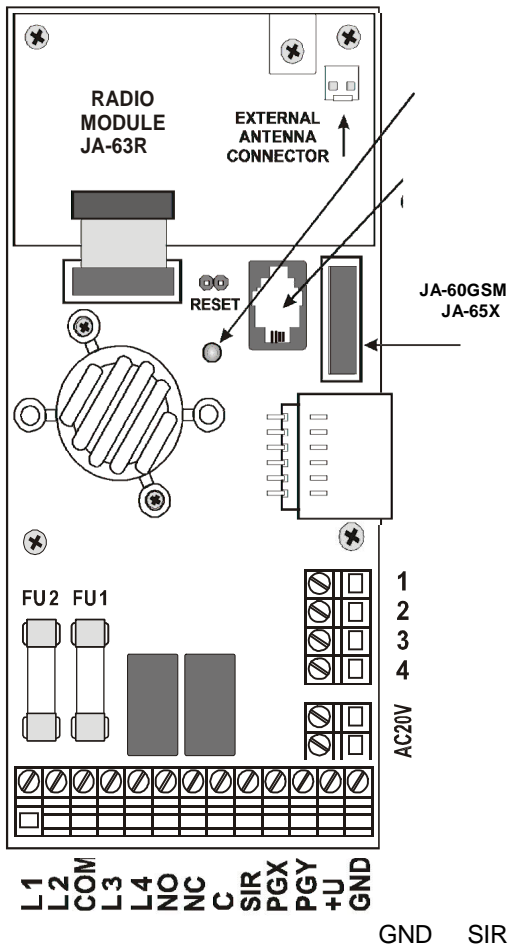


4

63X, SMS,

- IN ()
- OUT,
- ()





JA-60E /

1234.

1,2,3,4

JA-60E.

4-

JA-60E

1234.

AC20V -

L1,L2, L3, L4 -

: L1= (24)

COM

NO

NC

C

SIR

GND.

(

PGX, PGY (. . 10.6).

GND, PGX PGY 12 , 100)

UC,

+U

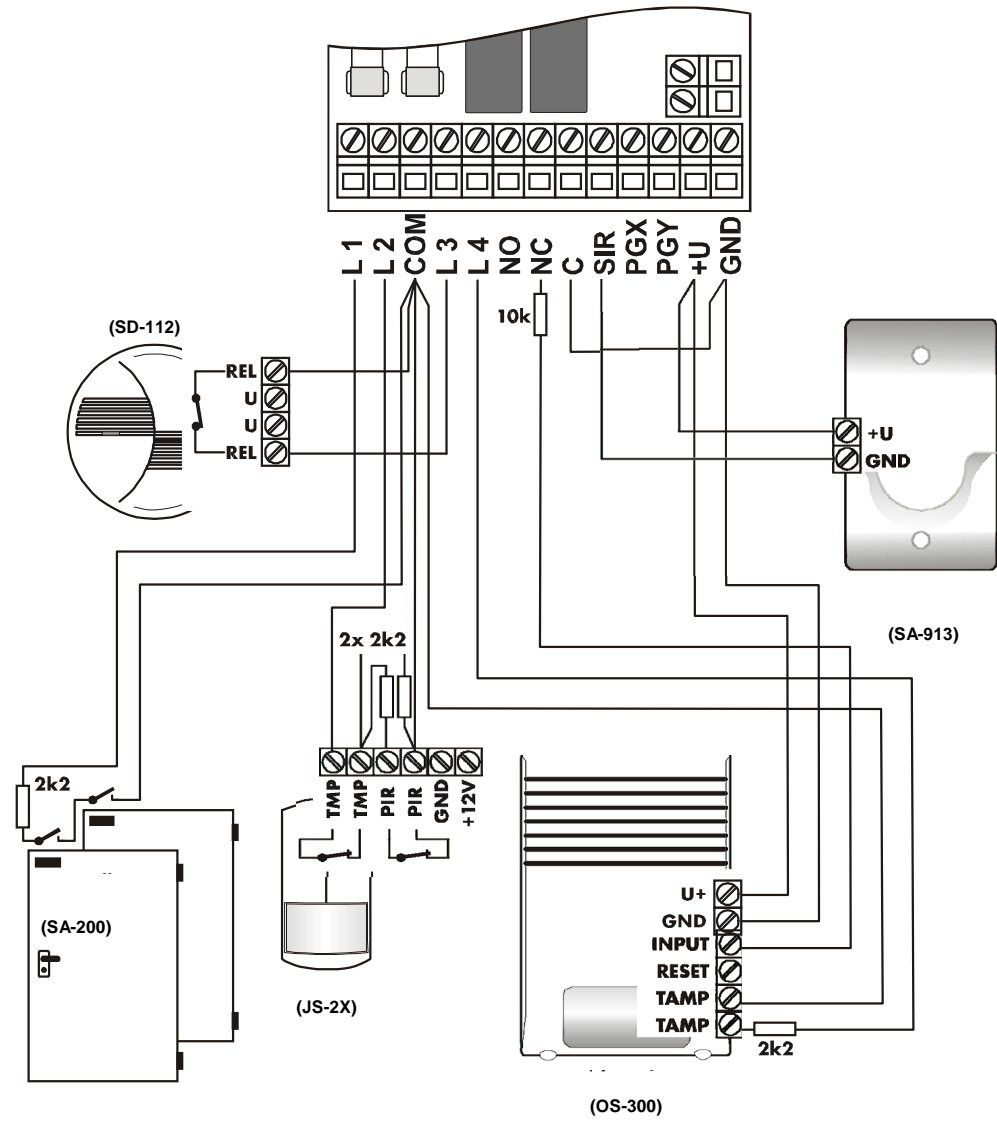
15

1

(.)

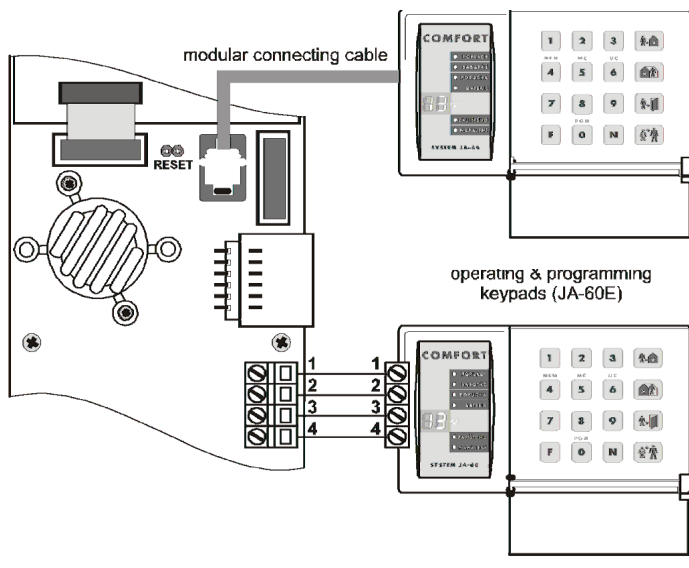
0,4 (1,2 (FU2 1.6 A) (

GND



. 1 -

6 JA-60



JA-60E (4-). 1234.
 (.).
 10 .
 JA-60E
 JA-60U.
 „R“,
 JA-60F.
 RC-11, RC-22, RC-60,
 JA-60D.
 8-
 JA-63 ComLink.
 60U. JA-

7

- JA-60 UC. "R",
- - 32 JA-60 (
-)
- (JA-60F JA-60D, - 8 RC-11 RC-22)
- **JA-60A** - A,
- () **UC-216 UC-222**
- UC. PgX PgY.
- **JA-6x** (Master & Slave).

10.1

8

- 12 , 1.3 2.6 / (
-)
- ,
- ,
- (+, -)
- !




9

-
-
- JA-60E "P", JA-60F, . 10.1.
- : „P“
- (. 15).

10

Comlink software (. 17).

- SC=6060) - (F 0 SC - SC = „P“
- "P"
- N.
- N („P“).
- 39x,

	1	1 7 , 2	-	R
	60 nn xyz	nn - , x - y - , s -	L1= L2= L3= L4=24	
	20x	$x = 1 - 9 (x 10 .)$	30 .	
	21x	$x = 1 - 9 (x 10 .)$	30 .	
	22x	$x = 1 - 8 (.), 0=10$ 9=15	4 .	
PgX	23x	$x = 0 - 8 (0- , 1- , 2- , 3- , 4- , 5- , 6- , 7- , 8- .)$		
PgY	24x	$x = 0 - 8 (0- , 1- , 2- , 3- , 4- , 5- , 6- , 7- , 8- .)$		
	25x	251 = 250 =		
	26x	261 = 260 =		R
	27x	271 = 270 =		R
	28x	281 = 280 =		
	290			R
UC-2xx, - .	299			R
  F4 F9	30x	301 = 300 =		
	31x	311 = 310 =		
	32x	321 = 320 =		
	33x	331 = 330 =		
	34x	341 = 340 =		
	35x	351 = 350 =		
	36x	361 = 360 =		
	37x	371 = 370 =		
	38x	381 = 380 =		R
	39x	391 = 390 =		
(A, B C)	690x	6901 = 6900 =		
	691x	6911 = 6910 =		
	692x	6921 = 6920 =		391
	693x	6931 = 6930 =		
SC+MC/UC	697x	6971 = 6970 =		
	61 nns	nn - n., s -	1-10A 11-16B	R
	62 nns	nn - n., s -	A	
	63 nns	nn - n., s -	A	R
/	64nahhmm	N - 0-9, a - hh - , mm -		
	5 nSC nSC	nSC =	6060	
	6999		-	
	4 hh mm DD MM YY		00 00 01 01 00	

(2), 8 (63KR 63KRX) JA-6x : (), 32

- 1 („P“)
- ③ **JA-60E** RESET (JA-60F:)
- ③ JA-60F
- ③ RESET

c8 (1 - 7) - A () - J () JA-6x). - 1 16 - c1

• () 3 ()

299

• () 2 (F

5

• ()

2.

3,

4

JA-60A

(A)

6

• ()

000000

JA-6x

1 16

8

()

, 0 10 (

F 0-100% ComLink).

1 7.

• - N.

N.

:

1

L1 L4,

:

60 nn xys

: nn = : 01 - 16

x = : 0 = „ 1 = , 2 = (2,2), 3 = 2 2,2)

y = : 0 = , 1 = , 2 = , 3 = , 4 = , 5 = , 6 =

s = , 1 = A, 2 = B, 3 = C (, s=1; s=2, . 10.23.

• (y=5) x = 0
 • (y=6, ...)
 : 2 , 1, : 60 02 201
 L1 = , L2 = , L3 = , L4 =

10.3 : 20 x

20x (x - x10). 10 90
 : 20 , 202
 : 30 .

10.4 : 21 x

21x (x - x10 10 90
 : 40 , 214
 : 30 .

10.5 : 22 x

22x (x= 1 8, x=9 - 15 x=0 - 10).
 : 15 , 229.
 : 4 .

10.6 PgX PgY : 23 x & 24 x

PgX and PgY , x, :

23 x - PgX.
 24 x - PgY.

x (,) :
 0 - ()
 1 - ()
 2 - ()
 3 -
 4 - ()
 5 - 5 (F3) ()
 6 - ()
 7 -
 8 /F8 -
 SMS ()
 F81 () F80 () . (10.13), F8x

x	23x (PgX)	24x (PgY)
0		Alarm A
1	B	B
2	A	A
3	B	B
4	A	B
5	A	B
6	A	B
7		
8	/F8	/F8

10.12). UC PgX PgY UC-216 UC-222 (23x 24x.

: PgX , 233, PgY
 245.

: PgX= , PgY= .

10.7

: 25 x

U, (F 0 “ ”),

:
251
250

10.8

: 26 x

30

:
261
260

GSM).
Comlink (17).

10.9

: 27 x

(, ,).
(, ,).

:
271
270

GSM).

10.10

: 28 x

:
281
280






) JA-6X, (, , . 10.1 10.12. J,
 (-).

a. J (10.1 10.12),
 b. (),
 c. (1
 d. 290 - 1 c8)
 e. (2).

∴

- RC-11.
- J.
- ()).
- (,).
- cN
- c3, 2

!). UC-216, UC-222 UC-260 (JA-6x.
 UC 299
 (10.1.) 299

	301	300
		” “
		 ” “
		 ” “
	F 4	F 4 ” “
	F80, F81	F8 “ ” 0 F8 “ ” 1
	F 9	F 9 ” “

JA-60D

10.14 _____ ()  - _____ : 31 x

(' _____). (10.2 10.28) :

:
311
310

10.15 _____ : 32 x

SIR (_____).

:
321
320


10.16 _____ : 33 x

). (5

:
331
330

: _____ *UC-260* (_____ ,
). :

10.17 _____ : 34 x

 (5).

:
341
340

:
36x.

10.18 _____ : 35 x

:
351
350
: _____ *UC-260* (_____ ,
). :

10.19 _____ : 36 x

(3) (1), (2),
(4).

:
361
360

340. JA-60A (320.).

10.20 _____ : 37 x

-. SIR 320, (

:
371
370

10.21 _____ : 38 x

:
381
380

10.22 _____ : 39 x

(, 4-).
(,
,)
, 3
(,),

:
391
390

10.23 _____ : 690 x

2
(,),

:
6900 ()
6901 A, B C (C)

10.24 _____ : 691 x

4

GSM

SMS.

: 6910

6911

:

10.25 _____ : 692 x

(.10.21),

: 6920

6921

:

10.26 _____ : 693 x

: 6930

6931

:

10.27 _____ : 697 x

: 6970

6971

: 1234)

: F0 6060 1234

(6060/

:

: (F0).

10.28 _____ : 61 nns

(. 10.23)

:

61 nns

: nn = 01 - 16

s = : 1 = A, 2 = B, 3 = C (, s=2,)

().

: 3 A : 61 031

: 1 - 10 A, 11 - 16 B.

10.29 _____ : 62 nns

(. 10.23),

A

B:

62 nns

: nn = 01 - 14

s = : 1 = A, 2 = B

• :
 •) , F1 (F2). B.
 : 4 A : 62 04 1

10.30 _____ **: 63 nns**

(RC-11, RC-22 JA-60D) (. 10.23)
 A B:

63 nns

: nn = 01 - 08 (c1 - c8)
 s = : 1 = A, 2 = B

• :
 • JA-60F (62 nns)
 • JA-60D RC-11 ()

: 5 A : 63 051
 : A.

10.31 _____ **: 64 nahhmm**

10 :
64 nahhmm
 : n = 0 - 9
 a = (.)
 hh = (00 23)
 mm = (00 59)

a		
0		
1		
2		
3		A
4		B
5		A
6		B

• :
 •) ,
 •) .
 : 21:15 , : 64 0 1 21 15

10.32 _____ **: 5 nSC nSC**

5 nSC nSC
 nSC – (4)
 : 1276 : 5 1276 1276
 : 6060.

10.33 _____ **: 6 9 9 9**

N. (.) .

4 hh mm dd MM YY

hh = (24)
mm =
dd =
MM =
YY =

: 30 2007 17:15 : 4 17 15 30 06 07

: 00 00 01 01 00

Comlink.

11

- "P"

(F0 "U").

F0

()

•

5

(JA-60P, JA-60N, JA-60B)

(F

()

5

JA-60P (5)

1

•

L1 - L4

2

•

Comlink (.17).

2 Comlink (.17). 5 SMS (JA-65X,).
 (F0 = 6060), „P“
 N.
 N („P“).
 (.10.7).

SMS

	90x	901 = 900 =		SMS
	91x	0= , 1= 1 + SMS, 2= 2, 3= SMS	911	
	92x	0= , 1= 1 + SMS, 2= 2, 3= SMS	921	
	93x	0= , 1= 1 + SMS, 2= 2, 3= SMS	931	
	94x	0= , 1= 1 + SMS, 2= 2, 3= SMS	941	
	95x	0= , 1= 1 + SMS, 2= 2, 3= SMS	951	
	99x	990= 991=	NO	
	7xx..x F y	xx...x = , y = 1 - 4, = F0	1: 2: 3: 4: 5:	
SMS	7x..xF9y..yF7 00F9F5	x..x= SMS y..y=		
	7F0Fy	y = 1 - 5, 7F0F0		
(1 2)	. 1: 85 . 2: 86	X X	(10 .) (10 .)	
		89		

12.1

: 7xxx...xxFy

7 xx... xx F y

xx...xx =
y =

1 - 4

16

F0

: 0, , 123456 2, : 7 0 F0 12345 F2

(F0)

).

7 F0 Fy

y -
7 F0 F0

1 - 4

SMS.

Jablotron's SMS (),
SMS , :

7 xx...x F9 yy...y F7 00F9 F7zz..z F5

:
xx...x = SMS ()
F9 = ()
yy...y = (SMS)
F7 =
00F9 = -

F7 = (. 12.4)
zz..z = SMS (),

F5 = 5 (5 32
F9 F7 1).

SMS : , , SMS
SMS GSM. (). SMS SMS

: SMS 483559876, SMS 606123456 41, :
7 483559876 F9 606123456 F7 00F9 F7 41 F5

SMS:

7 F0 F5

:
7 xx...x F9 zzz...z F5 xx..x - , zz...z (7
). - F0, * - F7 # - F8.
F0 F5.

: SMS ()

(10 .). 12.4,

- a) 85
- b) X,
- c) (10),
- d) ,

1. 2 86 a).

84). , (20), 12.4.

:
40
F9

91x - 95x

9 y x

y		x	
1		0	
2		1	1 SMS
3		2	2
4		3	SMS
5			

- SMS ()- ,
- (84, 12.3, x=1
- x=2.
- SMS 12.2 . 12.1 .
- : 2 SMS 1
- 911 921 932 943 SMS , :
- : 1 SMS (911, 921, 931, 941, 951).

12.5 _____ : **90 x**

:
901
900 ()
 :
 :

12.6 _____ : **99 x**

15 , (L).
 15
 :
991
990
 :
 :

12.7 _____ : **89**

, **89** 2.
 SMS ().
 (1 N. 88. ,).

13 _____

60E JA-60U, JA-
 - Comlink (. 17).
 :
 • 6060), "P" (F 0 ,
 • N.
 • N ("P").

	0 5 x	0= , 1= , 2-6 =	- ..
	(8 0 7 xxxxxxxx	8	00000000

0 5 x

x : 0 - 1 - = 1 2 10 - 45

2 - 6 - Comlink JA-60E.

89

: 0 =

8

5

0 7 xxxxxxxx

x x x - 8

: 00000000.

14

Comlink (. 17).

- (F0 , 6060), "P".
- N ("P").

0 001 xx	(. ! .)			00	
0 198 xx	: x = 0 - 9, F0 = A _h , F1 = B _h , F2 = C _h , F3 = D _h , F4 = E _h , F5 = F _h 00,				
0 2 xxxx	x = 0 - 9 ((4 , 3/1 3/2 0xxx))			0000	
0 3 xy	x: 0 = Ademco Slow 1 = Ademco Fast 2 = Telemax 3 = Franklin 4 = Radionics 2300	5 = Radionics 1400 6 = DTMF 2300 7 = Surgard 8 = Ademco Express 9 = Contact ID	y: 0 = 3/1 (xxx R) 1 = 3/2 (xxx rc) 2 = 4/1/1 (xxxx Rn) 3 = 4/2 (xxxx rc)	90	Contact ID 3/1
0 4 x	, x = 1 - 9 (x 10 .)			1	10
0 6 xx..xFy	xx...x y (1 2), = F0				
0 9 6060					

(/) SMS - 12.5 12.6.

Jablotron

6060),

Jablotron

SMS

ComGuard.

MS-300

16.

0 x x x r c

xxx = (001 198)
rc = ()
(R).

3/1 4/1/1

F: $A_h = F0$ $B_h = F1$ $C_h = F2$ $D_h = F3$

$E_h = F4$ $F_h = F5$

00,

:

"Rc"

3/1 4/1/1
"Rc" "rc".

Contact ID (CID)
(Rc),

00

CID

16.1.

Jablotron.

Surgard

4/2

(. 14.3)

0

15.

10.

16

CID.

(

).

: 00

02 x x x x

xxxx - (x - 0 9).

(- 0123) (3/1 3/2) 0.

(051)

A_h

: 0000.

03 x y

x - (0 - 9, .)
 y - (0 - 3 .)

x		Hand-shake		Kiss off		
0	Ademco Slow (Silent Knight)	1400Hz	1900Hz	1400Hz	10bps	
1	Ademco Fast	1400Hz	1900Hz	1400Hz	14bps	
2	Telex	2100Hz	1650Hz	2100Hz	10bps	
3	Franklin	2300Hz	1800Hz	2300Hz	20bps	
4	Radionics 2300	2300Hz	1800Hz	2300Hz	40bps	
5	Radionics 1400	1400Hz	1900Hz	1400Hz	40bps	
6	DTMF 2300	2300Hz	DTMF	2300Hz	DTMF	
7	Surgard*	2300Hz	DTMF	2300Hz	DTMF	4/3
8	Ademco express*	Dual tone	DTMF	1400Hz	DTMF	4ID/2
9	Contact ID*	Dual tone	DTMF	1400Hz	DTMF	CID

* "y" (0 рекомендуется)

y			
0	3/1		xxx R
1	3/2		xxx rc
2	4/1/1		xxxx Rn
3	4/2		xxxx rc

xxxx =
 R = ()
 rc = ()
 n = ()

Surgard : xxxx E rc, E	
E	
1	
2	
3	
4	
5	
6	
8	/
9	
A	24

-
-
-

- 4/2 -

4

2

(051)

: 90 (Contact ID).

).

8

04 x

x - 10 (1 9, 3 = 30)
 : 1 = 10

06 x x x F y

xx...x - (16)
 y = 1
 2

(3 .)
 F7 # F8

F0.

*

02 123456

06 02 F0 123456 F1.

06 F0 F y

y = 1
 2

(051)

0 9 6060

15

:

-
-
-
-
-
-

1

RESET,

"P" ()

10

1234, : 6060, (. 10).

JA-60F (. 10.1).

(280),

RESET

rc (00 - FFh)

Rc.

00, 3/1

4/1/1,

16

R.

Contact ID

11

(Rc),

(. 16.1).

001	N.1	Rc	068	11	rc	137	9	Rc
002	N.2	Rc	069	12	rc	138	10	Rc
003	N.3	Rc	070	13	rc	139	11	Rc
004	N.4	Rc	071	14	rc	140	12	Rc
005	N.5	Rc	072	15	rc	141	13	Rc
006	N.6	Rc	073	16	rc	142	14	Rc
007	N.7	Rc	074		Rc	143	15	Rc
008	N.8	Rc	075	1	Rc	144	16	Rc
009		Rc	076	2	rc	145		Rc
010	N.1	Rc	077	3	rc	146		Rc
011	N.2	Rc	078	4	rc	147		Rc
012	N.3	Rc	079	5	rc	148	1	Rc
013	N.4	Rc	080	6	rc	149	2	Rc
014	N.5	Rc	081	7	rc	150	3	Rc
015	N.6	Rc	082	8	rc	151	4	Rc
016	N.7	Rc	083	9	rc	152	5	Rc
017	N.8	Rc	084	10	rc	153	6	Rc
018	N.9	Rc	085	11	rc	154	7	Rc
019	N.10	Rc	086	12	rc	155	8	Rc
020	N.11	Rc	087	13	Rc	156	9	Rc
021	N.12	Rc	088	14	Rc	157	10	Rc
022	N.13	Rc	089	15	Rc	158	11	rc
023	N.14	Rc	090	16	Rc	159	12	rc
024		Rc	091		Rc	160	13	rc
025		Rc	092		Rc	161	14	rc
026	N.1	Rc	093		Rc	162	15	rc
027	N.2	Rc	094	1	Rc	163	16	rc
028	N.3	Rc	095	2	Rc	164		rc
029	N.4	rc	096	3	Rc	165		rc
030	N.5	rc	097	4	Rc	166		rc
031	N.6	rc	098	5	Rc	167		Rc
032	N.7	rc	099	6	Rc	168		Rc
033	N.8	rc	100	7	Rc	169		Rc
034		rc	101	8	Rc	170		Rc
035	N.1	rc	102	9	Rc	171	(24 . . .)	Rc
036	N.2	rc	103	10	Rc	172	(30 .)	Rc
037	N.3	rc	104	11	Rc	173		Rc
038	N.4	rc	105	12	Rc	174		Rc
039	N.5	rc	106	13	Rc	175		Rc
040	N.6	rc	107	14	Rc	176		Rc
041	N.7	rc	108	15	Rc	177	N.1	Rc
042	N.8	rc	109	16	Rc	178	N.2	rc
043	N.9	rc	110		Rc	179	N.3	rc
044	N.10	rc	111		Rc	180	N.4	rc
045	N.11	rc	112		Rc	181	N.5	rc
046	N.12	rc	113	1	Rc	182	N.6	rc
047	N.13	rc	114	2	Rc	183	N.7	rc
048	N.14	rc	115	3	Rc	184	N.8	rc
049		Rc	116	4	Rc	185		rc
050		Rc	117	5	Rc	186		rc
051		Rc	118	6	Rc	187	. . . 1	Rc
052		Rc	119	7	Rc	188	. . . N.2	rc
053		Rc	120	8	Rc	189	. . . N.3	rc
054		Rc	121	9	Rc	190	. . . N.4	rc
055		Rc	122	10	Rc	191	. . . N.5	rc
056		Rc	123	11	Rc	192	. . . N.6	rc
057		Rc	124	12	Rc	193	. . . N.7	rc
058	1	Rc	125	13	Rc	194	. . . N.8	rc
059	2	rc	126	14	Rc	195		rc
060	3	rc	127	15	Rc	196		rc
061	4	rc	128	16	Rc	197		Rc
062	5	rc	129		Rc	198		Rc
063	6	rc	130	1	Rc			
064	7	rc	131	2	Rc			
065	8	rc	132	3	Rc			
066	9	rc	133	4	Rc			
067	10	rc	134	5	Rc			
			135	6	Rc			
			136	7	Rc			
				8	Rc			

CID

:

XXXX 18 Q XYZ 01 CCC

XXXX , 01 , CCC , 18 ((.)) , Q 1 3, XYZ

JA-63	Q XYZ		JA-63							
			C	S	c	A	J	L	d	
058	1 110			4				4		
113	3 110			4				4		
177	1 120		4		4					4
058	1 120			4						
197	1 120							4		
187	3 120		4		4					4
113	3 120			4						
198	3 120							4		
058	1 130			4						
113	3 130			4						
058	1 134			4						
113	3 134			4						
075	1 137		4		4	4	4			4
129	3 137		4		4	4	4			4
074	1 138		4		4				4	4
175	3 138		4		4				4	4
053	1 140		4							
075	1 144			4						
129	3 144			4						
094	1 300	()	4		4	4	4	4	4	4
052	3 300		4							
148	3 300		4		4	4	4	4	4	4
172	1 301		4							
173	3 301		4							
054	1 302				4	4	4			
056	1 302		4							
057	3 302		4							
055	3 302				4	4	4			
051	1 305		4						4	
049	1 306		4		4					4
050	3 306		4		4					4
058	1 330							4		
167	1 354								4	
169	1 354								4	
168	3 354								4	
170	3 354								4	
174	1 355		4							
176	3 355		4							
094	1 380			4						
148	3 380			4						
094	1 381			4	4	4	4			
148	3 381			4	4	4	4			
054	1 384			4						
055	3 384			4						
026	1 401		4		4					4
001	3 401		4		4					4
024	3 402	()	4		4					4
025	3 408		4		4					4
171	1 602									4

Contact ID:

JA-63		CCC
	S	001 to 016
		201 to 216
	c	401 to 408
		501 to 514
	C	701
	A	711
	J	721
	L	731
	D	741

JA-63

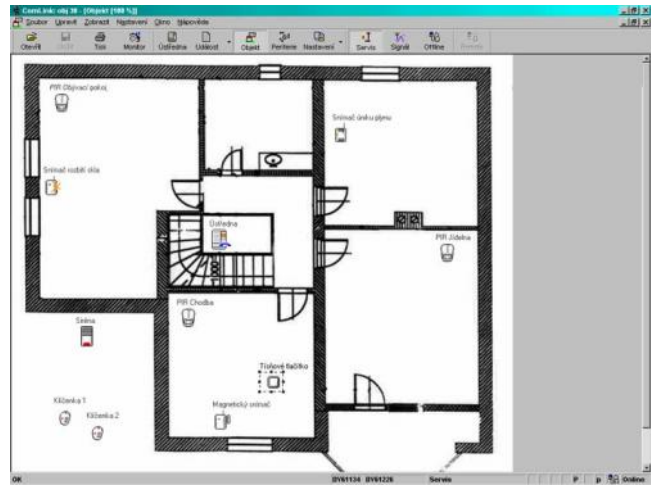
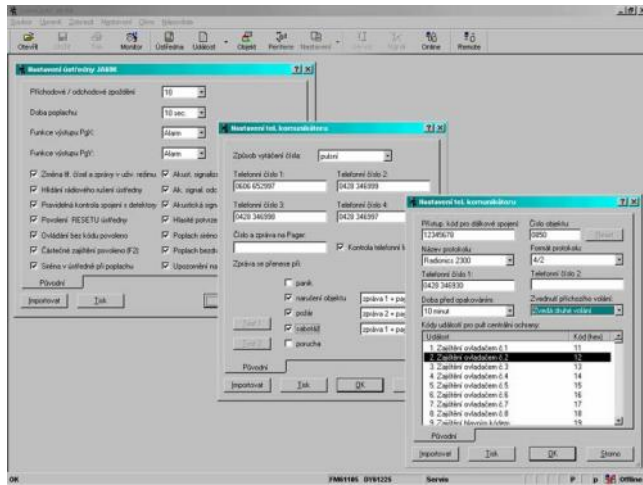
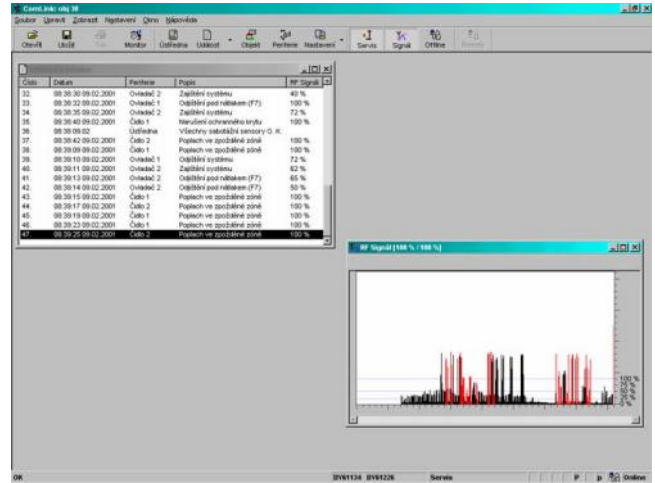
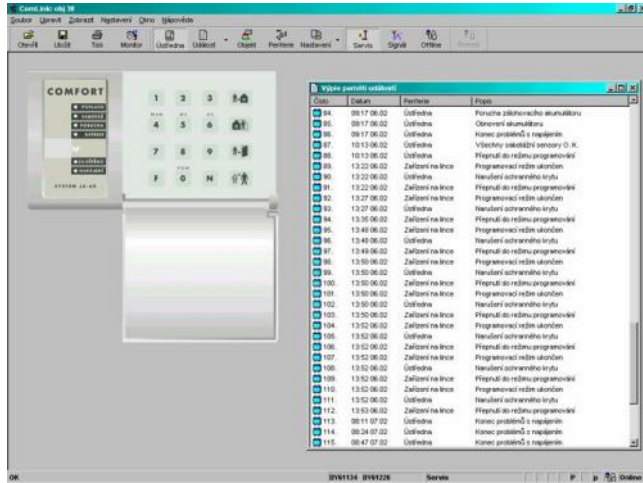
JA-60U.
JA-63

Comlink

Windows.

PC-60A.

Comlink



18

JA-60U JA-60E JA-63 Comlink

(. 13.2).

JA-60E JA-63 JA-60E. (. 17).

18.1

Comlink JA-60U.

JA-63

((- 8)

(

JA-63,

).

Comlink

19

.

.

(.),

(

).

.

.

.

(.)

20

JA-60E	(1-1, 2-2, 3-3, 4-4)	
	((
	N	
	F4.	
	15	
	(...),	
		Comlink
		F0
	PC-60A	COM

21.1

JA-6x
 (. 10.11.).
 .) (J).

21.2

JA-63

Jablotron.

Jablotron

www.jablotron.com

21.3

JA-60N

1 , 100 ,

JA-60P

1 , 100 12 /120°.

JA-60B

(+) (9),
 1 , (, 100 ,).

JA-60SR

1 , 100 ,

JA-60SP

1 , 100 ,

JA-60G

.) - (, , 50 ,

RC-40

- (A&B 1&2).
 Jablotron. , RC-40

UC.

() 6 , 30

RC-11

UC. 6 , 30

RC-22

.) - (, RC-11.
 100

RC-60

- (A B)

JA-60D

.) (, ,
 , 1 , 100 ,

JA-60F

JA-60E.
LED

(1 8).

1 (40 (30).

JA-60A

IP44,

100

UC-260

220

(110 /1)

8

UC-260.

UC-216

JA-63.

(X Y,

120 /

1

). 12 24

15

PgX PgY

UC-222

JA-63.

(250 / 6A).

PgX

220

21.4

JA-60E -

5

, 7

JA-60U.

PC-60A -
(COM)

ComLink,

: www.jablotron.com

Windows.

JA-60U-

(JA-60E)

JA-60U

Comlink. JA-60E

21.5

SA-200, SA-201 -

25

JS-20 -

12 /120°.

10 12 (

GBS-210 -

(9),

15 12

JS-25 -

15

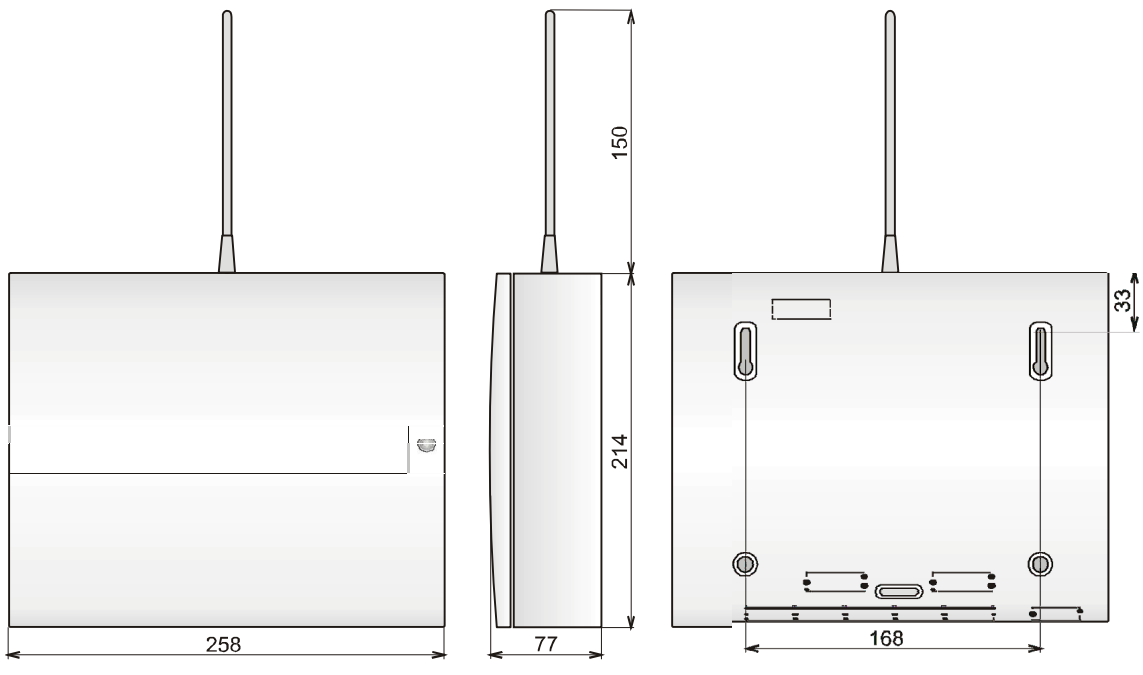
12

SD-112 -

5 12

(, , , ,)
 133 GS-130, GS-133 - GS-130 220 , GS-
 - 150 12
 SA-105, SA-107 - 120 / ,
 250 12
 OS-300, OS-305 -
 118 / . OS-300 IP44,
 OS-305

230
 12 , 1,3 2,6 / , 0,1 A, II
 13 , 5 0,4 1,2 A 15 (1
), 30
 4 , : , , 24 ,
 : , , ,
 ** 16 (2 , 32)
 ** 433,92 , ,
 4- JA-60E, 8 JA-60F **
 RC-11 JA-60D **
 14 ,
 1A/60 ; PgX PgY (, ,
), (12 , 0,7 A)
 ** PgX, PgY UC-2xx
 127 , ,
 * 65X: , 5 SMS , 2
 (ComLink + JA-60U),
 : JA-60E JA-60U
 * Contact ID, Ademco, Telex, Franklin, Radionics, SurGard, DTMF2300, (198
)
 * JA-65X
 ** (JA-63KR, JA-63KRX)
 EN 50131-1, EN 50131-6
 2 ()
 II - (-10 + 40°C)
 EN 60950, II
 ETS 300683
 ETSI EN 300220
 ERC REC 70-03
 TBR 21/1998, EG 201 121 V1.13/2000, AS/ACIF S002/2001 (Australia)
 *
 EMC
 **
 **
 *
 Jablotron Ltd., , JA-63 1999/5/EC.
 www.jablotron.cz.



()